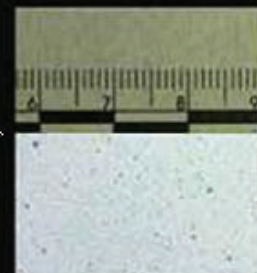
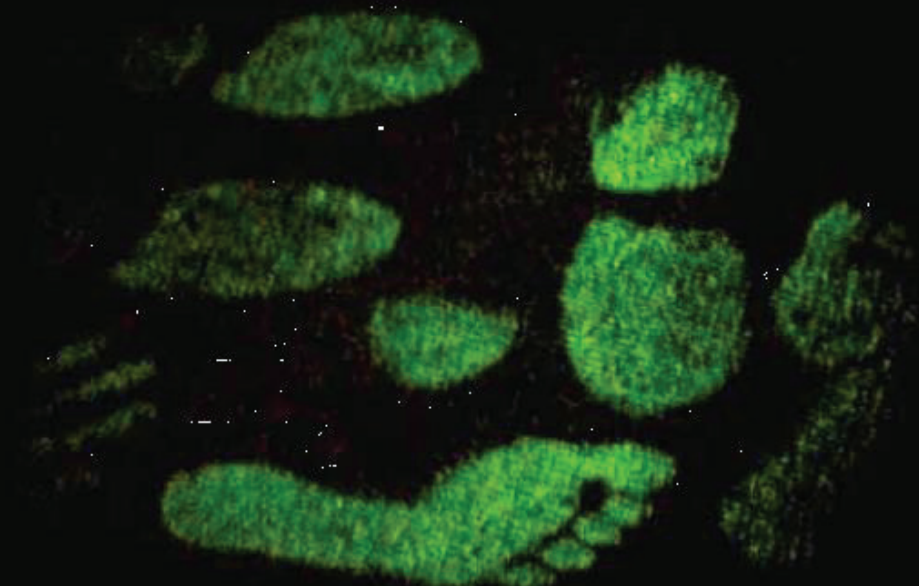




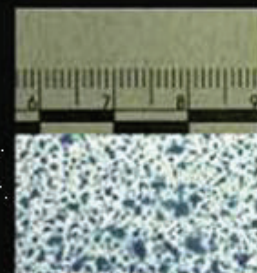
The Magnolia Print

Volume 34 2012

Official Publication of the Mississippi
Division of the International Association
for Identification



ABASpray™



Traditional Sprayer

Hemascein™

To Reveal, Identify and Collect *Latent Bloodstains*

- Sensitivity in Detecting Latent Bloodstains ... **2 to 5 Times More ✓**
- DNA Recovery ... **Yes ✓**
- Recovers Finer Detail ... **Yes ✓**
- Longevity ... **Highest for it to be Photographed ✓**
- Stable ... **7 yrs (Room Temperature) ✓**
- Safety ... **Fluorescein is Routinely Used in Humans ✓**
- Identify if Human Origin ... **Yes (Hematrace®) ✓**
- Formulation ... **Fluorescein Containing Formulation (Aqueous) ✓**

Visit hemascein.com for more details



Serving the forensic community since 1996

Abacus Diagnostics • 6520 Platt Ave #220 • West Hills, CA 91307 • USA
Phone (818) 716-4735 • Toll Free (877) 225-9900 • Fax (818) 716-9471
Email: CustomerService@abacusdiagnostics.com • www.abacusdiagnostics.com

Paid Advertisement

“Why We Kill”

The Creation of A Killer

MDIAI Conference in Oxford, MS



Chief Mike Martin with the Oxford Police Department welcomed everyone to Oxford and Ole Miss and wished everyone a good stay.

Day 1 and Day 2 began with Dr. Lawrence Simon, author of the books “Murder by Numbers: Perspectives on Serial Violence” (2002) and “Mortal Desire” (2012). He lectured on sexually deviant killers.





Dr. Simon conducted a “hands-on” experiment to see if one could concentrate and follow directions. This was relevant to his lecture because psychopaths normally are unable to do this. The test subject in this picture is Barbara McGlamory from FDLE.



Door prizes were awarded by MDIAI officers.



Dr. Carl Jensen, Director of the Center for Intelligence and Security Studies at Ole Miss finished up Day 2 and Day 3. His lectures were on sexually deviant killers, profiling techniques and investigative analysis.

Dr. Jensen posed a riddle as an experiment to see if the participants would respond as a serial killer would. He also had a hands-on demonstration using crime scene photos; he asked participants to write down important facts and gather all information from the photos to try to generate a profile.







INSANE Evidence Packaging?

To view more insanity,
go to LPinsanity.com.

*For proper handling/packaging procedures,
go to LynnPeavey.com.*

 **LYNN PEAVEY COMPANY**

Toll-free 800-255-6499 Fax 913-495-6787

www.lynnpeavey.com

MSIN0911

President Bobby Kelly
was presented with a
plaque for his service
for the 2011-2012 year.



He handed off the gavel
to the 2012-2013
President, Mike Hood.



From the President

Dear MDIAI Members,

As your newly elected President for 2012-13, I would like to say thank you all for making this Division one of the best divisions in the International Association for Identification. We will continue to grow as long as we have members like you that support this division.

I would also like to thank the out-going President, Officers and Board of Directors for their dedication to making the 2012 Spring Conference a success. We are currently in the planning stages for the Spring Conference, which is set to take place in April 2013 at The University of Southern Mississippi in Hattiesburg. Conference information and officer contact information and updates can be found on our website (www.mdiai.com).

Sincerely,

Mike Hood, Latent Print Examiner
Mississippi Crime Laboratory
Jackson, Mississippi



Although we are sad to see her go, we appreciate everything Secretary Marie Pace has done for the division!



Officers, Board of Directors and Committees

Officers

Mike Hood (Mississippi Crime Laboratory), President
Heather Burkett (Mississippi Crime Laboratory), 1st Vice President
Kristi Johnson (Harrison County Sheriff's Office), 2nd Vice President
Shannon Roy (Mississippi Crime Laboratory), Secretary
Heather McNeill (Ron Smith and Associates), Treasurer
Amanda Self (Gulfport Police Department), Sergeant-At-Arms
Lynée Boackle (Mississippi Crime Laboratory), Editor
Amy Malone (Mississippi Crime Laboratory), Webmaster
Paulette Weible (Search Dogs South), Historian
Jimmy Perdue (Mississippi Crime Laboratory), Regional Representative

Board of Directors

Chair (past president) — Kevin Houston (Oxford Police Department)
Member/1st VP — Heather Burkett (Mississippi Crime Laboratory)
Member — Lauren Smith (Ron Smith and Associates)
Member — Jeff Nester (Mississippi Crime Laboratory)
Member — Bob Weible (Search Dogs South)
Member — Randy Chatham (Rankin County Sheriff's Department)
Member — Jeff Robertson (Brandon Police Department)

Resolution Committee

Chair/1st VP — Heather Burkett (Mississippi Crime Laboratory)
Member — Jeff Robertson (Brandon Police Department)
Member — Bob Weible (Search Dogs South)
Member — Jamie Bush (Mississippi Crime Laboratory)
Member — Jon Byrd (Ron Smith and Associates)

Nominating Committee

Chair (past president) — Kevin Houston (Oxford Police Department)

Officers, Board of Directors and Committees

Publication Review Committee

Chair/2nd VP — Kristi Johnson (Harrison County Sheriff's Office)

Member — Paul Wilkerson (Mississippi Crime Laboratory)

Member — Shannon Roy (Mississippi Crime Laboratory)

Member — Marie Pace (Mississippi Crime Laboratory)

Member — Melissa DeBerry (Mississippi Crime Laboratory)

Conference Committee

Chair — Heather Burkett (Mississippi Crime Laboratory)

Member — Dean Bertram (University of Southern Mississippi)

Member — Amanda Self (Gulfport Police Department)

Member — Marie Pace (Mississippi Crime Laboratory)

Vendor Liaison Committee

Member — Ron Smith (Ron Smith and Associates)

Member — Jamie Robinson (Mississippi Crime Laboratory)

Member — Jason Pressly (JusticeTrax, Inc.)

Member — Shannon Roy (Mississippi Crime Laboratory)

Audit Committee

Member — Paulette Weible (Search Dogs South)

Member — Lauren Smith (Ron Smith and Associates)

Latent Print Certification Committee

Chair — Paul Wilkerson (Mississippi Crime Laboratory)

Member — Ron Smith (Ron Smith and Associates)

Member — Mike Hood (Mississippi Crime Laboratory)

Member — Jimmy Perdue (Mississippi Crime Laboratory)

Crime Scene Certification Committee

Chair — Marie Pace (Mississippi Crime Laboratory)

Member — Mike Manna (Biloxi Police Department)

Member — Kathy Brock-Powell (Mississippi Crime Laboratory)

SIRCHIE

Tradition. Expertise. Excellence.



Fingerprint Taking Supplies

*Latent Print Brushes,
Powders, and Kits*

RUVIS Systems

*Evidence Collection
and Preservation*

Chemical Reagents

Narcotics Analysis

Alternate Light Sources

Impression Evidence

Specialized Training Courses

Custom Vehicles

Computer Software



SIRCHIE HEADQUARTERS

100 Hunter Place, Youngsville, NC 27596
Ph: 800-356-7311 • Web: www.sirchie.com

SIRCHIE VEHICLE DIVISION

PO Box 789, 612 Gravelly Hollow Rd., Medford, NJ 08055
Ph: 800-545-7375 • Web: www.sirchienj.com



Questions, Comments or Suggestions?

Contact Editor Lynée Boackle at

lboackle@mcl.state.ms.us OR visit us

online at www.mdiai.com

If you would like to see additional information about training, articles or news stories feel free to contact us.